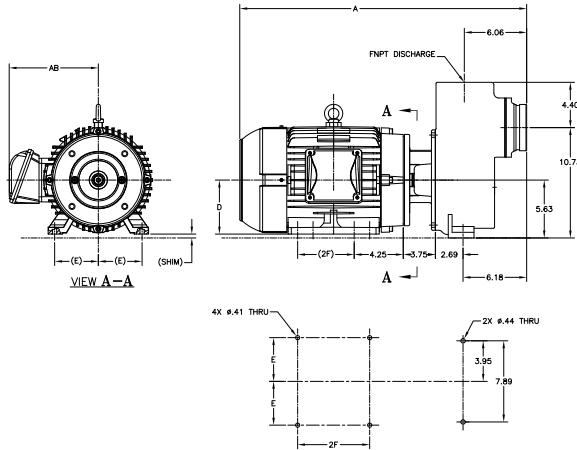


H Series Configurations

Closed Coupled

- ODP-JM Motor Frame
- TEFC-JM Motor Frame

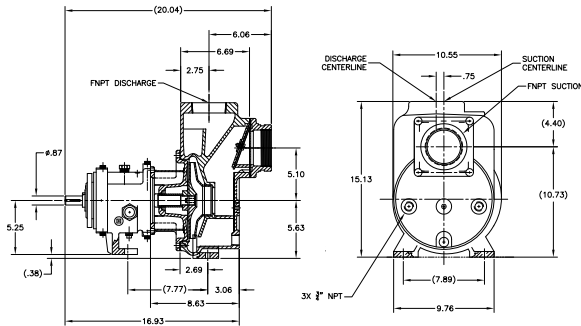


Single Phase Drip Proof								
Motor	Frame	A	AB	B1	BA	2F	D	E
3 HP	182 JM	23.16	6.69	2.875	3.50	4.50	4.50	3.75
5 HP	184 JM	23.16	6.69	2.875	3.50	5.50	4.50	3.75
7.5 HP	213 JM	26.68	7.97	2.875	4.25	5.50	5.25	4.25
10 HP	215 JM	26.68	7.97	2.875	4.25	7.00	5.25	4.25
Three Phase Drip Proof								
3 HP	145 JM	21.66	5.87	2.875	2.75	5.00	3.50	2.75
5 HP	182 JM	23.16	6.69	2.875	3.50	4.50	4.50	3.75
7.5 HP	184 JM	23.16	6.69	2.875	3.50	5.50	4.50	3.75
10 HP	213 JM	26.68	7.97	2.875	4.25	5.50	5.25	4.25
15 HP	215 JM	26.68	7.97	2.875	4.25	7.00	5.25	4.25
20 HP	254 JM	29.51	9.45	3.75	4.25	8.25	6.25	5.00
Three Phase TEFC								
5 HP	182 JM	23.16	7.56	2.875	2.75	4.50	4.50	3.75
7.5 HP	184 JM	23.16	7.56	2.875	2.75	5.50	4.50	3.75
10 HP	213 JM	27.87	8.58	2.875	3.50	5.50	5.25	4.25
15 HP	215 JM	27.87	8.58	2.875	3.50	7.00	5.25	4.25
20 HP	256 JM	30.76	10.48	3.75	4.25	10.00	6.25	5.00

NOTE: All dimensions are for reference only

Long Coupled

- Build with ANSI grade power frame



Flange Options

Pump Size	Suction	Discharge
HL	3" NPT/3" Victaulic Groove	2" NPT/2" 125# Flange
HH	4" NPT/4" Victaulic Groove	3" NPT/3" 125# Flange

NOTE: The discharge port is flanged and threaded

Pressure and Temperature Capability

	Temperatures up to 100°F	Temperatures over to 100°F
Pressure	120 psig	Contact Factory



Seal Options

- Carbon Ni-Resist Viton®
- Carbon Silicon Carbide Viton®
- Silicon Carbide Silicon Carbide Viton®
- Silicon Carbide Tungsten Viton®