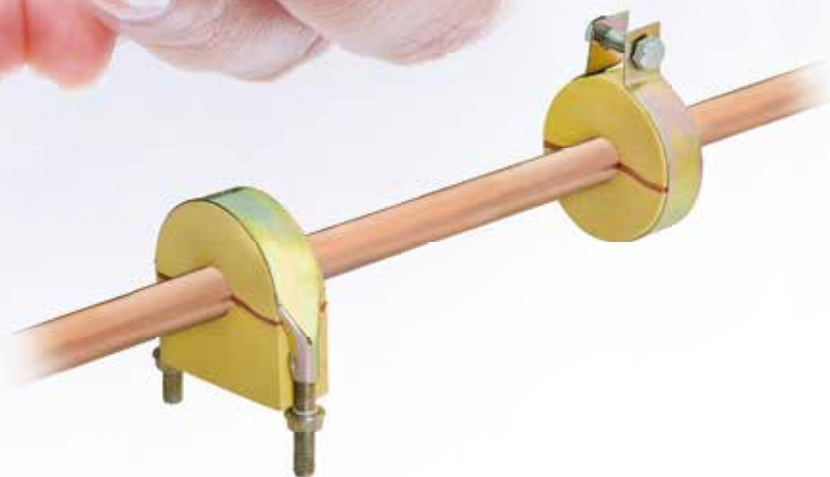


# PEVA THERMAL INSULATING CLASS 'O' PIPE SUPPORT FOR HVAC & R PIPING

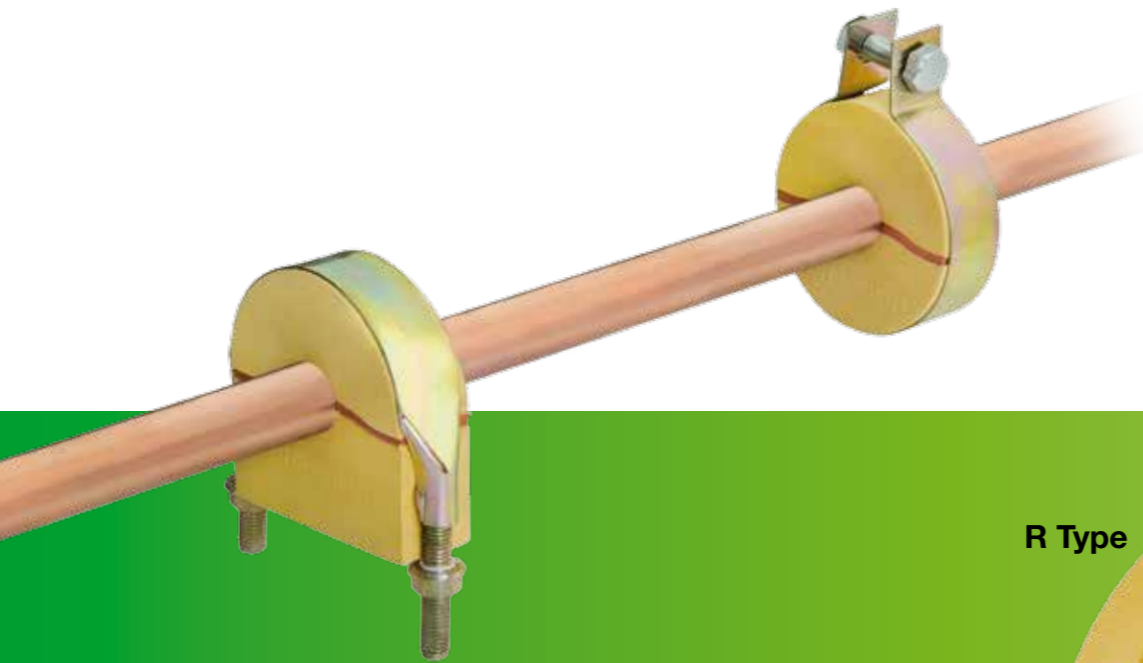


BB050460T 25



**BB**<sup>®</sup> **BEST BOND**

# PEVA THERMAL INSULATING PIPE SUPPORT

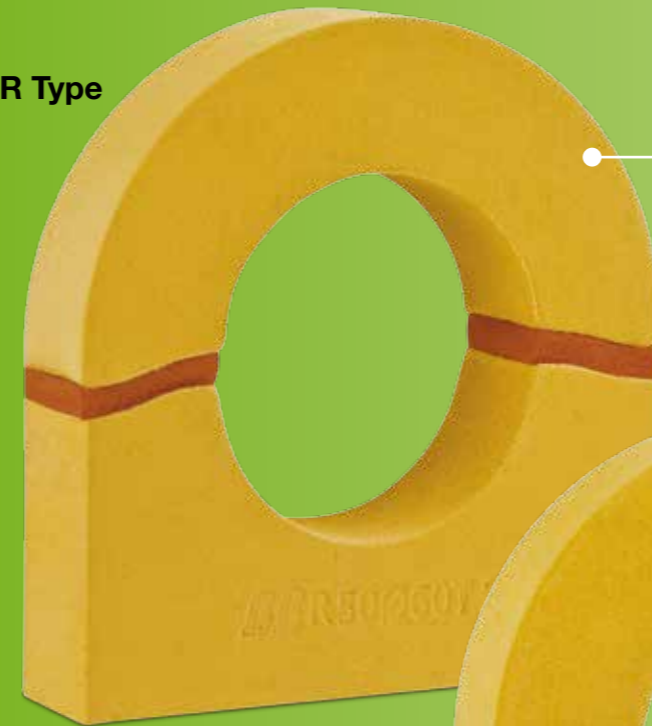


**MERITON EAST (HK) LTD** was established in 1982. The company began by introducing technology and products for the oil and gas industries from USA and Europe to China. Our market gradually expanded to include clean fuel system, vehicle & engine test equipment, environmental and water purification system, air and liquid filtration equipment, airport ground support equipment, building services equipment, air-conditioning equipment and air tools & pumps. We provide professional parts services and technical support for each product system as well.

Customer satisfaction is our top priority. We take the same degree of interest in their success as we have for our own business.

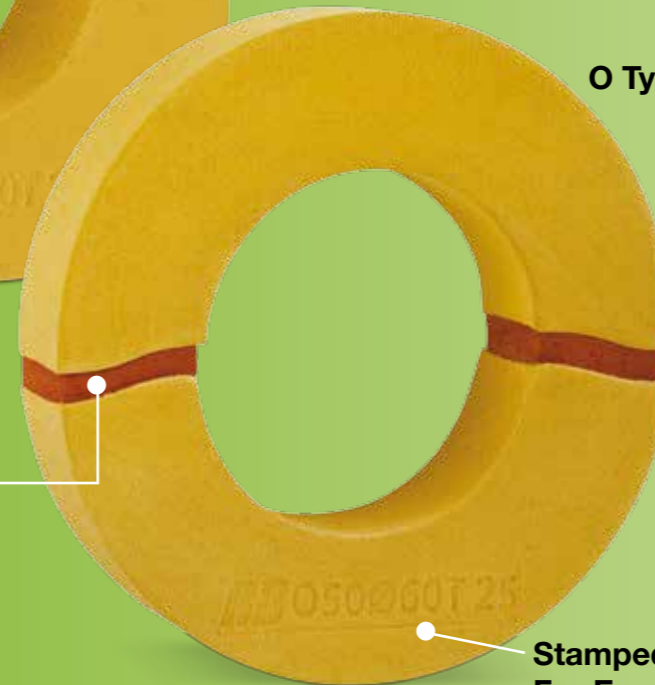
Our branches are located in Hong Kong, Shanghai and Beijing. Total staff of forty provides professional and satisfied pre-sales and after-sales services to customers in spare parts, technical support and training.

R Type



PEVA Class 'O'  
Fire Resistant Material

O Type



≥ 90% High Recovery Ratio  
PEVA Resilient Gasket  
S-Lock Design

Stamped Brand Name & Model Number  
For Easy Identification

**Fire Performance: British Standard Class 'O'**  
**BS 476: Part 6 (I<12, i<6) & BS 476: Part 7 Class 1**

### Features:

- Closed cell structure completely seals out air and moisture.
- High pressure foamed by high density PEVA (Polyethylene Vinyl Acetate) with special treatment for long service life.
- Environment friendly and can be recycling.
- Non-toxic.
- Fire performance Class 'O'
- Resists most chemicals, acids and bases.
- Does not absorb water.
- Well designed for pipe support application.
- Durable and high load bearing property.
- Insulates against temperature.
- CFC, HCFC free.



### Environment Friendly

Replace wood block and material can be recycling. Protect the environment.



### Fire Resistance

Tested to British Standard Class 'O'  
BS 476: Part 6 (I<12, i<6) & BS 476:  
Part 7 Class 1 fire resistance.



### Thermal Insulating

Closed cell structure, thermal conductivity  $\leq 0.055$  W/mK, conforms to National Standard GB/T10294-2008 Equipment and Piping Thermal Insulation Design Guidelines.



### Water Resistance

Negligible water absorption due to closed cell structure.



### Corrosion Resistance

High pressure foamed high density PEVA resists most chemicals, acids and bases.

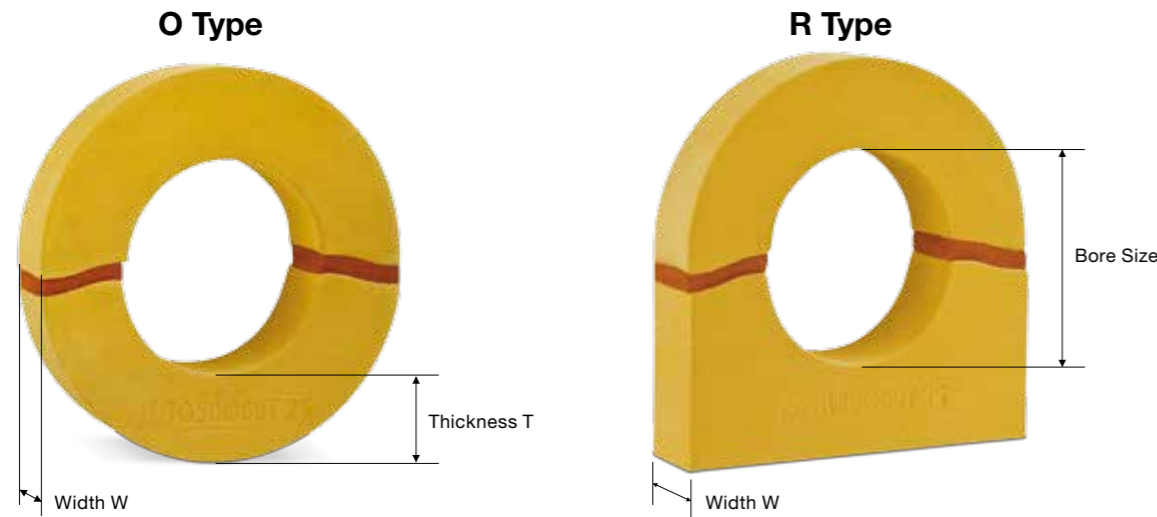
# "Best Bond" PEVA PIPE SUPPORT

**Application** - BB PEVA pipe support is widely used in the central air-conditioning chilled, hot water and refrigerant pipe support installation.

Technical Data		
• <b>Temperature Range</b>	+70°C to -253°C	
• <b>Thermal Conductivity at 25°C</b>	≤0.055 W/mK	GB/T 10294-2008
• <b>Water Absorption</b>	0.04%	GB/T 17794-2008
• <b>Compressive Strength at 25°C</b>	2.05 Mpa	GB/T 8813-2008
• <b>Formaldehyde Emission</b>	0.02 mg/L	GB 18580-2001
• <b>Fire Performance</b>	British Standard Class 'O' BS 476: Part 6 (I<12, i<6) BS 476: Part 7 Class 1	

Comparison table with wood support				
Product	Density kg/m <sup>3</sup>	K value W/mK	Max. Temp °C	Min. Temp °C
BB PEVA	556	≤0.055	70	-253
Hard Wood	560	>0.150	70	0

Nomenclature						
O/R	F FC	015	W	25	T	20
O=O Type R=R Type	F=Water Pipe FC=Refrigerant Pipe	Model no.	Support Width		Support Thickness	



## "Best Bond" PEVA Class 'O' Pipe Support Series (for Water Pipe) Technical Table

Model No.	Bore Size		Thickness T (mm)								Width W (mm)	Max. Span (m)	Max. Load (kg)
	(mm)	(inch)	20	25	30	32	40	50	65	75			
15	21	1/2"	•	•	•	•	•	•	•	•	25	1.2	30
20	28	3/4"	•	•	•	•	•	•	•	•		2	49
25	34	1"	•	•	•	•	•	•	•	•		2.5	60
32	42	1-1/4"	•	•	•	•	•	•	•	•			74
40	49	1-1/2"	•	•	•	•	•	•	•	•		3	86
50	60	2"	•	•	•	•	•	•	•	•		3.5	106
65	75	2-1/2"	•	•	•	•	•	•	•	•	4	150	
80	89	3"	•	•	•	•	•	•	•	•	30	178	
100	114	4"	•	•	•	•	•	•	•	•		228	
125	140	5"	•	•	•	•	•	•	•	•	40	336	
150	167	6"	•	•	•	•	•	•	•	•		5	401
200	219	8"					•	•	•	•	50	701	
250	273	10"					•	•	•	•		874	
300	325	12"					•	•	•	•		1170	
350	356	14"					•	•	•	•		1282	
400	407	16"					•	•	•	•		1465	
450	457	18"					•	•	•	•		1825	
500	508	20"					•	•	•	•	4	2032	
550	560	22"					•	•	•	•		2240	
600	610	24"					•	•	•	•	2240		
650	660	26"					•	•	•	•	3	2640	
700	711	28"					•	•	•	•		2880	
800	813	32"					•	•	•	•		3280	
900	914	36"					•	•	•	•		3680	
1000	1016	40"					•	•	•	•	4080		

Note: Pipe support installation exceeding the max. span is strictly forbidden. For requirement exceeding the max. span, please consult us before installation.

**“Best Bond” PEVA Class ‘O’ Pipe Support Series (for Refrigerant Pipe)  
Technical Table**

Model No.	Bore Size		Thickness T (mm)					Width W (mm)	Max. Span (m)	Max. Load (kg)
	(mm)	(inch)	20	25	32	40	50			
007	7	1/4"	●	●	●	●	●	25	1	10
010	10	3/8"	●	●	●	●	●			14
013	13	1/2"	●	●	●	●	●			19
016	16	5/8"	●	●	●	●	●			23
018	18	3/4"	●	●	●	●	●			26
021	21	7/8"	●	●	●	●	●		1.2	30
024	24	1"	●	●	●	●	●		2	42
028	28	1-1/8"	●	●	●	●	●			49
031	31	1-1/4"	●	●	●	●	●		2.5	55
034	34	1-3/8"	●	●	●	●	●			60
039	39	1-1/2"		●	●	●	●			69
042	42	1-5/8"		●	●	●	●		3	74
045	45	1-3/4"		●	●	●	●			79
049	49	1-7/8"		●	●	●	●		3.5	86
054	54	2-1/8"		●	●	●	●			95
060	60	2-3/8"		●	●	●	●		4	106
066	66	2-5/8"		●	●	●	●			132
075	76	3"		●	●	●	●		5	150
089	89	3-1/2"		●	●	●	●	30		178

Note: Pipe support installation exceeding the max. span is strictly forbidden. For requirement exceeding the max. span, please consult us before installation.

**Duct Support**

	W		H		L
Model	20	X	25	X	300

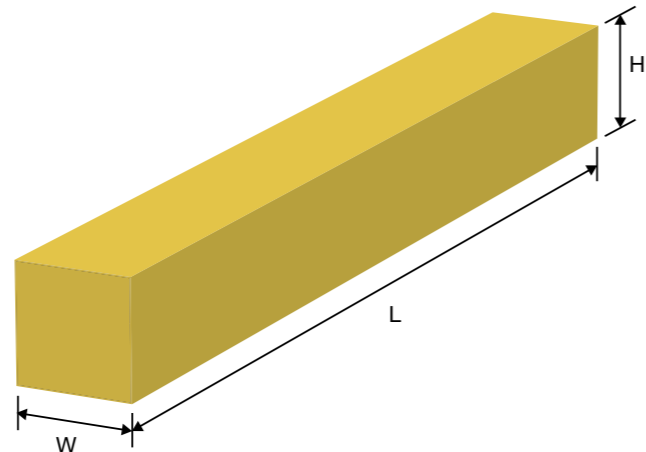
W – 20 ~ 2000 (mm)

H – 25, 30, 40, 50 (mm)

L – 300 ~ 2000 (mm)

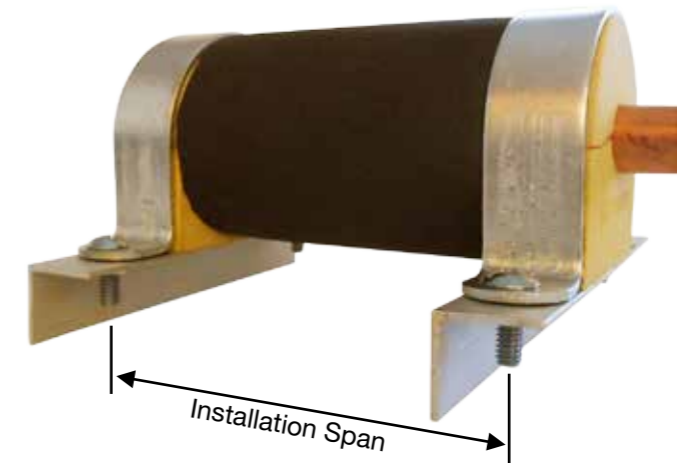
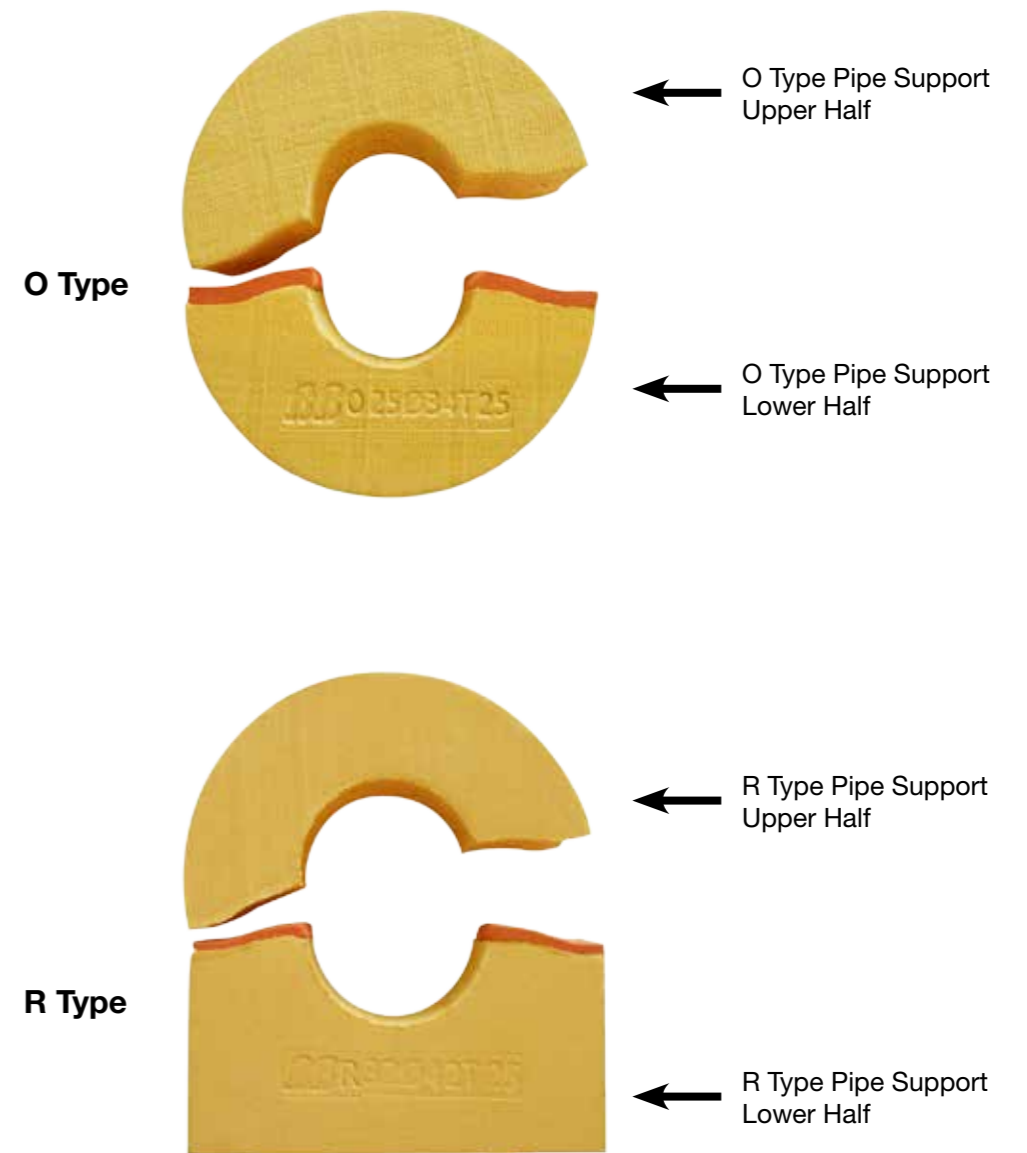
**PEVA Material Properties**

- **Compression ratio @10%**
  - Compression strength 0.8Mpa
  - Load capacity 8.16kg/cm<sup>2</sup>
  - Recovery ratio ≥ 65%



1. Thermal conductivity will not be affected when compressed thickness is less than 35%.
2. Span width should be calculated base on the specified compression strength, load capacity and 1.3 safety factor.

**Installation Guidelines**



# Job Reference

## Government Project

Aberdeen Police Training School  
Arsenal House West Wing, Police, Headquarters  
Border Police Headquarters  
Butterfly Shopping Centre, Tuen Mun  
Cape Collinson Correctional Institution  
Castle Peak Police Station  
Cheung Sha Wan Police Station  
Government Dockyard, Stonecutters Island  
Hong Chi MorningHill School, Tuen Mun  
Hong Kong Convention and Exhibition Centre  
Hong Kong International Airport Passenger Terminal Building  
Hong Kong Police Headquarters  
Hong Kong Space Museum, Tsim Sha Tsui  
Hong Kong University of Science And Technology  
Kwai Chung Preliminary Treatment Works  
Luen Wo Hui Municipal Services Building  
North Point Government Primary School  
Reprovisioning of NTS Animal Management Centre and  
Shatin Plant Quarantine Station  
Shatin Police Station  
Shatin Sewage Treatment Works  
Stonecutters Island Sewage Treatment Works  
Sun Yat Sen Memorial Park and Swimming Pool Complex  
Tai Lam Centre for Women  
The Chinese University of Hong Kong, Centralized General  
Research Laboratory Complex (Block 1)  
Wong Tai Sin Government Primary School  
Yau Tong Post Office

## Industrial and Commercial Project

Caritas Medical Centre  
Chu Hai College of Higher Education Tuen Mun  
Global Switch GSHK1 Data Centre  
Liaison Office of the Central People's Government  
Maxim's Food Factory, Tai Po Ind. Estate  
Miramar Shopping Centre  
Murray Building  
Star Centre Kwai Chung  
The Chinese University of Hong Kong, Centralized General  
Research Laboratory Complex (Block 1)  
The Papillons

## MTR Project

Express Rail Link 855-Kwai Chung Ventilation Building  
Express Rail Link 855-MKV  
Express Rail Link 855-Yuen Long Ventilation Building  
Express Rail Link 856-Shek Kong Stabling Sidings and  
Emergency Rescue Siding  
Fortress Hill Station  
Ho Tung Lau Depot  
Kowloon Bay Depot  
Lo Wu Station  
Lok Ma Chau Station  
Shatin Station  
Shek Mun Station  
Sheung Shui Station  
Tai Wai Station  
Tai Wo Station  
Tsuen Wan West (TW5)  
University Station  
Wong Tai Sin Station

## Hotel Project

Acesite Hotel  
BP International House  
Disney Explorers Lodge  
Four Seasons Hotel  
Holiday Inn Express Hong Kong Soho  
Hong Kong Ocean Park Marriott Hotel  
Hotel Madera Hong Kong  
Ibis Hong Kong Central & Sheung Wan Hotel  
Intercontinental Hotel  
Kowloon Shangri-La Hotel Hong Kong  
Mia Casa Hotel  
New World Centre H2 & H2 Podium  
North Point Hotel  
Novotel Century Hong Kong Hotel  
Rosedale Hotel Kowloon  
Shatin Hotel STTL248  
The Harbourview Hong Kong  
The Wharney Guang Dong Hotel Hong Kong



**Meriton East (HK) Ltd.**

**萬東(香港)有限公司**

香港九龍長沙灣長沙灣道932號興迅廣場6樓A座  
Flat A, 6/F, Grandion Plaza, No. 932 Cheung Sha Wan Road,  
Cheung Sha Wan, Kowloon, Hong Kong.  
Tel: (852) 2745 8216 Fax: (852) 2745 8363  
Website: [www.meritoneast.com](http://www.meritoneast.com) E-mail: [joeyiu@meritoneast.com](mailto:joeyiu@meritoneast.com)

